

# battery bank®

## SAFETY, OPERATION & MAINTENANCE INSTRUCTIONS FOR 11 DOOR SITE CHARGING UNIT

Control Doc. No. UI 0526 / 0306 Issue 01 08/03/06

### IMPORTANT SAFETY INSTRUCTIONS

This instruction booklet contains vital information for the safe use and efficient operation of the *BATTERY BANK*. Carefully read and understand all instructions before operating, maintaining or cleaning the unit. Failure to adhere to the instructions could result in fire, electric shock, serious personal injury or property damage.

**KEEP THIS BOOKLET FOR FUTURE REFERENCE.**

### BATTERY BANK IDENTIFICATION



Figure 1.

- |                       |                                    |
|-----------------------|------------------------------------|
| 1) Charging Locker    | 4) Management Locker Padlock       |
| 2) Barrel lock & key. | 5) Management Advice Label         |
| 3) Management Locker  | 6) Mains entry point (either side) |

### GENERAL SAFETY INFORMATION

1. **Ensure** power supply is correct voltage for charging unit by checking the Rating Plate on the unit.
2. **Replace** damaged power cord immediately.
3. **Refer** all servicing of electrical parts to a qualified electrician.
4. **Protect** power cord from damage due to contact with sharp objects, chemicals or hot surfaces.
5. This product is designed for **indoor** usage only and should not be used outdoors, near or immersed in water.
6. **Ensure** the mains power cable is fully unwound before use.
7. **Ensure** the mains cable does not present a trip hazard. Do not run cable across walkways. Once the cable has been routed secure cable in position.
8. If an extension power cord is required, use maximum of one only, 14 Metre 3G 1.5mm<sup>2</sup> for 230V. The extension power cable must be fully unwound.

### CAUTION

1. **Ensure** that unit is positioned on a firm, horizontal dry surface.
2. **Do Not** move *BATTERY BANK* whilst switched on.
3. **Do Not** remove plug from mains supply by pulling on power cord.
4. **Ensure** the *BATTERY BANK* is secured in position before use using the fixing holes provided in the top two cabinets.
5. **Do Not** leave the management locker door open when *BATTERY BANK* is in use.
6. **Do Not** store liquids in the lockers as spillages may result in power failure or worse electric shock.
7. **Ensure** the mains cable is only routed through the openings provided at either side of the unit.
8. **Caution** should be observed when opening used lockers. Objects may have become insecure and fall when door is opened.
9. **Do Not** overload sockets. Each socket should not exceed 0.8A (800mA) at 230V~.
10. The *BATTERY BANK* has been designed to charge power tool batteries and mobile phones only. Ensure any device to be charged does not exceed 800mA- Check devices rating plate for information.
11. **Do Not** link *BATTERY BANK* together.
12. **Ensure** all doors are closed when the lockers are not in use.
13. **Do Not** obstruct air vents.

## INSPECT YOUR NEW BATTERY BANK.

The package should include the following items which should be removed from the packaging carefully and inspected for damage;

### BATTERY BANK (with power cord, plug)

10 Lock barrels, each barrel complete with 2 keys, key ring and a key fob.

1 Management locker padlock complete with 2 keys, key ring and a key fob.

## GENERAL OPERATIONAL INFORMATION

The BATTERY BANK is used with an electrical supply of 230V~50Hz 16A (see Rating Plate).

Birchwood recommend the use of the Defender 230V 16A Blue plug. (Part No. E884125).

## TO USE

1. Insert appliances to be charged into the locker. Plug into the RCD socket, ensure the sockets are set to on.
2. Do not store other items within the lockers during charging which may restrict air flow through the cabinet and cause overheating.
3. Insert £1 coin into the lock and close door, lock door and remove key.
4. To access cabinet insert key and open door, collect £1 coin and remove items. The key will remain in the door until next use.

## FITTING THE LOCKS INTO THE BARRELS

Fitting the key barrels into the £1 return lock mechanism is a very simple procedure, which is only required once on first assembly. Ensure the key barrel and lock are aligned correctly. To align position the key as illustrated in fig.2. Ensure the key barrel is positioned with the key at approximately 11 o'clock. You will note there is a notch, which can be viewed in the barrel, which aligns with a notch on the coin return mechanism. Push the key barrel into position. Once the key has been positioned you cannot remove it until a £1 coin has been inserted into the lock.

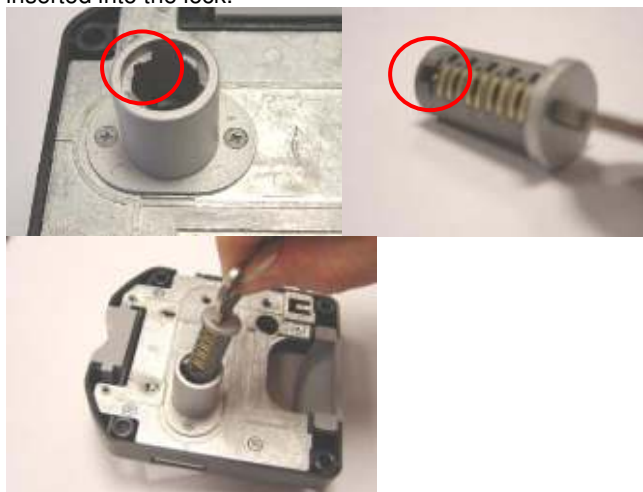


Figure 2.

Please note these photographs have been taken without the £1 coin return mechanism fixed to the door. This is for illustration only. The barrels are fitted to the lock mechanism whilst attached to the doors.

Please ensure only £1 coins are used to operate the locks. Once the locks have been fitted ensure the corresponding locker identification is noted on the key fob. In the event of a key being lost the lock barrel will need replacing. You will need to purchase a replacement lock kit, which comes complete with 5 barrels each complete with 2 keys and a key fob and a barrel removal key. Insert the removal key and withdraw the barrel. Fit new barrel as described in the above procedure.

## SOCKET OPERATION

The RCD socket should be tested each time before use.

Testing procedure

- 1) Remove appliance plugs from sockets.
- 2) If the red signal flag is not visible in the status window, press the grey (ON) button.
- 3) The red flag should appear in the status window. If the red flag does not appear it may mean that there are no mains supply fed to the socket. If mains supply is being fed to the socket and the red flag does not appear, see 'Safety Notes'.
- 4) Press the white (TEST) button. The red flag should disappear. If the red flag remains visible, **DO NOT USE**. See 'Safety Notes'.
- 5) Reset the device by pressing the grey (ON) button. The red flag should reappear in the status window.

## SAFETY NOTES

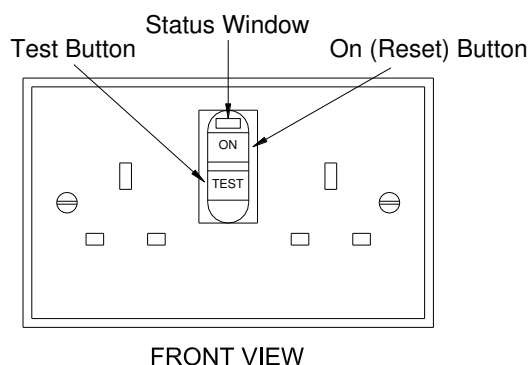
- 1) If the device does not operate in the way described in the 'Test Procedure' above, do not use. It is likely that the RCD device is faulty and should be returned to the vendor.
- 2) No attempt should be made to repair the RCD socket. The units are sealed to prevent tampering and any damage to this seal will invalidate the guarantee.

## USING THE RCD SOCKET

- 1) If the RCD socket is not set press the grey (ON) button.
- 2) Insert the plug of the appliance you wish to use
- 3) The RCD socket should remain set and the appliances should work normally. The red flag will remain visible in the status window. If the action of plugging in the appliance causes the device to trip (the red flag will disappear from the status window), it is likely that there is a fault with the appliance. Consult a qualified electrician

**Please Note:** These sockets are non-latching, in the event of power loss to the BATTERY BANK all RCD sockets will switch off.

**IMPORTANT: DURING RELOCATION, THE UNIT SHOULD REMAIN SWITCHED OFF AND DISCONNECTED FROM THE POWER SUPPLY.**

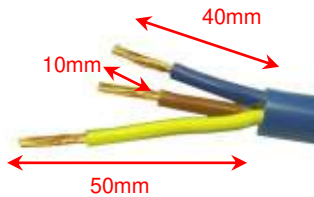


## REPLACEMENT PLUG WIRING INSTRUCTIONS

In the event of the plug requiring re-wiring or replacing, please follow these instructions;

**230V – BATTERY BANK** recommend the use of a 16Amp blue plug that conforms to BS EN 60309. Part No. E884125

1. Unscrew the screw holding the plug rear cover with the blue plug housing and pull apart.
2. Insert the power cord through the rear cover.
3. Loosen the two screws on the strain relief (situated on the rear of the blue plug housing) and remove it.
4. Strip the outer power cord insulation approx. 50mm to expose the three cores.
5. Shorten the live and neutral cores to approx 40mm, ensuring the earth is at least 10mm longer.
6. Strip the insulation of the three cores approx. 10mm to expose the copper strands.



- Insert the **BROWN** (live) core into the correct terminal (manufacture symbols may differ) and loosely tighten both screws.
  - Insert the **BLUE** (neutral) core into the correct terminal (manufacture symbols may differ) and loosely tighten both screws.
  - Insert the **YELLOW/GREEN** (earth) core into the correct terminal (manufacture symbols may differ) and loosely tighten both screws.
7. Ensure all copper wire is fully inserted into correct terminal positions before fully tightening all terminal screws.
  8. Clamp the strain relief over the outer insulation of the power cord (leaving at least 5mm of insulation above the strain relief on the exposed three cores side) and then fix it in place with the two screws.
  9. Push the plug rear cover together with blue plug housing and fully tighten with the screw. **Do not over tighten.**

## ELECTRICAL TEST, MAINTENANCE & STORAGE

### WARNING: THIS IS A CLASS 1 TESTED APPLIANCE

- When earth bond testing, the readings should be 0.1Ω and below.
- **Do Not** use abrasive cleaners or polishes.
- Always switch 'off', disconnect the **BATTERY BANK** from the power supply before cleaning.
- When not in use, store in a dry suitable environment (preferably in the original carton to prevent damage).

## TROUBLE SHOOTING

FAULT DESCRIPTION	SUGGESTED SOLUTION
<b>NO OUTPUT FROM SOCKET</b>	<ul style="list-style-type: none"> <li>• Check power supply.</li> <li>• Check MCB.</li> </ul>
<b>OTHERS</b>	Consult a qualified electrician or contact <b>BATTERY BANK</b> (contact details below).

## SPECIFICATION DATA

<b>PART NUMBER</b>	S10400
<b>POWER REQUIREMENT</b>	230V~, 50Hz 16A
<b>POWER CORD LENGTH</b>	3 Meters
<b>PLUG</b>	Defender 230V~ 16A blue plug with grey rear cover Part No: E884125
<b>POWER CORD</b>	230V - Black 3G 1.5mm <sup>2</sup> H07 RNF
<b>DIMENSIONS (HxWxD)</b>	1880 x 460 x 305mm
<b>WEIGHT</b>	63Kg

## SPARE PARTS

COMPONENT	PART NO	QTY
Plug	E884125	1
Padlock c/w 2 Keys, fob & key ring.	S10410	1
Lock Barrel kit. 5 lock barrels each c/w 2 keys, fob and key ring. The kit contains 1 removal key.	S10445	1
2 Gang RCD socket metal clad	S10416	1
£1 coin return lock mechanism.	S10412	1
16A Mains circuit breaker (MCB) 2 pole C rated.	S10421	1

**NOTE: All electrical replacement parts should only be replaced by the manufacturer, his agent or a suitably qualified person in order to avoid a hazard.**

### BATTERY BANK

C/O Birchwood Products Ltd

Birch Park

Park Lodge Road

Giltbrook

Nottingham

NG16 2AR

Tel: +44 (0)115 938 9000

Fax: +44 (0)115 938 9010

e-mail: sales@birchwoodproducts.com

Website: www.birchwoodproducts.com